



the shortcut to peace of mind





Say hello to your new frient

Imagine always having a frient who looks out for what matters most to you.

You know, someone who keeps your loved ones safe and comfortable. A frient who safeguards your home and someone who leads you on the path to a greener everyday life.

Now that's a frient!

Danish design





**Mature and
high-quality sensors**

Value proposition

Frientliness
Peace of mind
Safety
Quality
Simplicity
Control

Friend(t)

A friend is someone who won't lie to you. They respect you for who you are and make every moment with you count.

Time with your friends should be fun and you shouldn't have to change for them. Your friends should understand you and trust you.



Compatible hubs

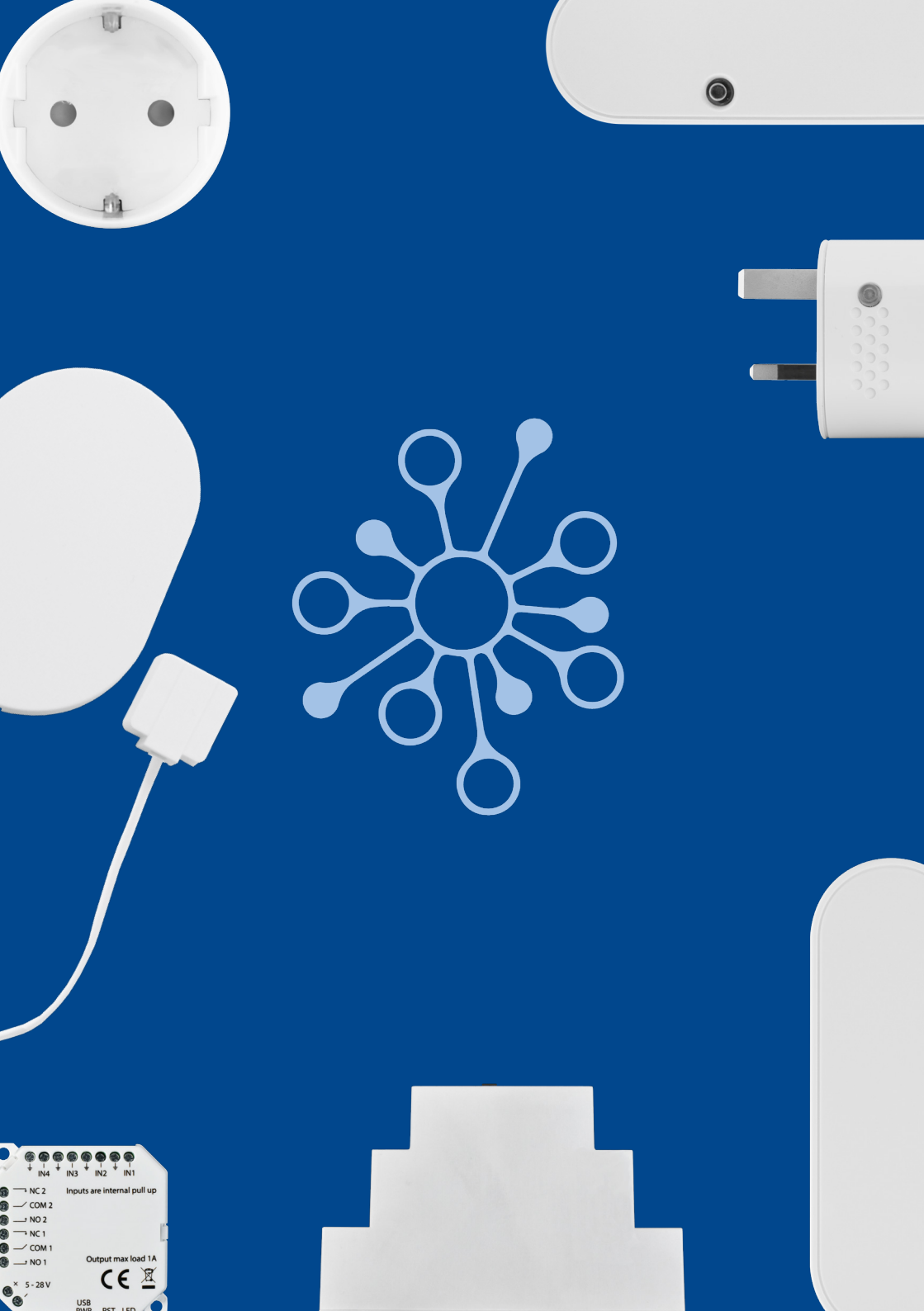
Your new best friends require a hub to connect to your smart home.

All friends communicate via Zigbee and are Zigbee-certified.

You can always find a list of compatible hubs at:

www.frient.com/compatible-hubs/





Become a distributor

The frient product portfolio is based on more than 15 years of experience in developing Zigbee-based IoT devices.

Over the years, more than 4 million products have been deployed under various brands.

With the frient brand, you can sell reliable and stable products that are based on proven technology and ensure happy customers.

All frients communicate via Zigbee, providing secure and reliable communication with smart home hubs.

Join the club of 70+ distributors selling the frient devices.

Contact us at: info@frient.com

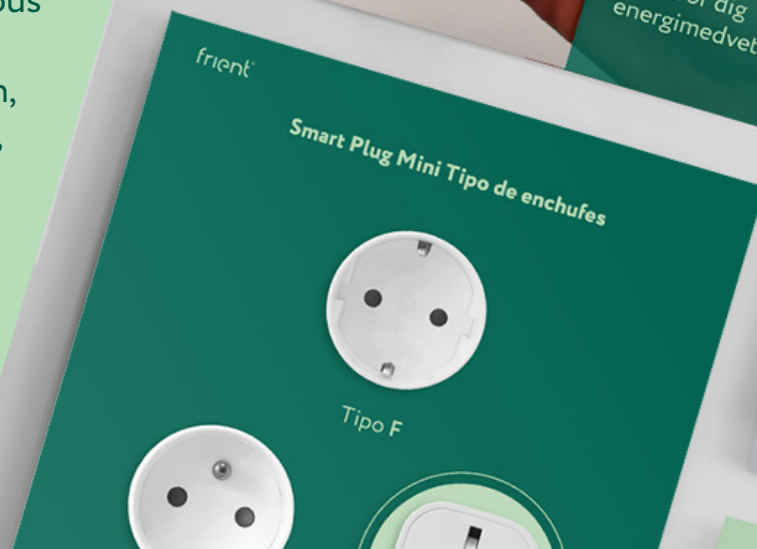
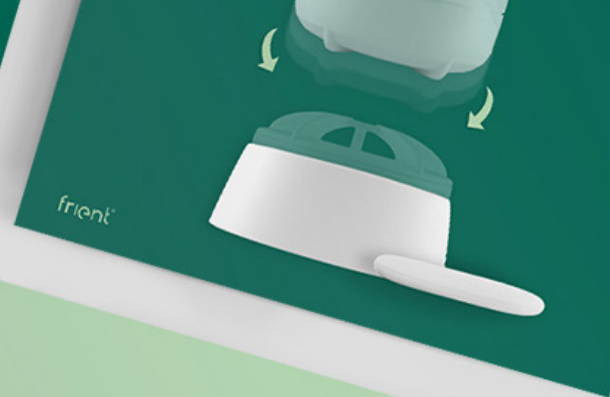
Available for resellers

Marketing materials in 11 languages

We provide you with an extensive selection of texts and images that you can include in your web shop and marketing materials.

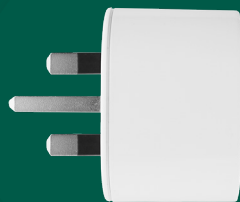
In total, the frient drive contains over 2000 files.

Short and long product descriptions and various images are available in:
Danish, Dutch, English, Finnish, French, German, Italian, Norwegian, Polish, Spanish, and Swedish.





**Your new
energy friends**



On, off, on, off

Smart Plug Mini 2

Need a friend to help you track your electricity consumption? Or maybe someone who turns your appliances off to help you save money?

The Smart Plug Mini 2 is an intelligent electricity consumption tracker and switch. Simply plug it into a power socket and connect your kettle, TV, electric radiator, or another electrical appliance. Now, you can track the consumption and turn the appliance on or off remotely.



That's what friends are for



Letting you control
your appliances



Remote on/off
switching



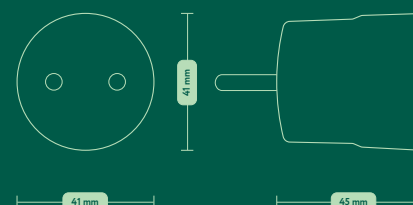
Tracking your
electricity
consumption



*Not all features supported by all hubs

SPECIFICATIONS

Communication	Zigbee
Power supply	230V +/-10%
IP class	IP40
Operation temp.	0 to +50°C
Color	White



Power off, save money

Smart Cable 2

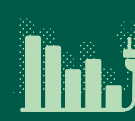
Here's a friend who wants your everyday life to be greener and paves the way for you. The friendly Smart Cable 2 is an electricity usage tracker and a remote switch.

Connect it to the cord of your electric radiator, fan, or another electrical appliance, and it's ready to monitor the consumption. The Smart Cable 2 also lets you turn the appliance on and off remotely.

That's what frients are for



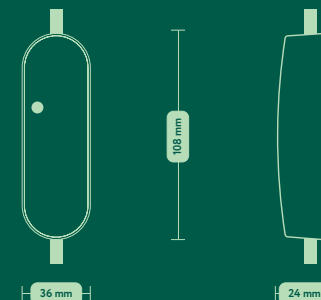
Remote on/off
switching



Monitoring
your electricity
consumption



Making you
energy-aware



SPECIFICATIONS

Communication	Zigbee
Power supply	230V +/-10%
IP class	IP30
Operation temp.	0 to +50°C
Color	White



*Not all features supported by all hubs

Gain control, be energy smart

Smart DIN Relay

Here's someone who looks out for your electricity consumption and wants you to become energy smart. With the smart relay mounted on your DIN rail, you can switch on and off anything connected to an electrical circuit remotely.

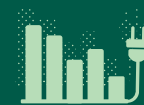
Depending on the circuits of your home, you can for example turn off the heating and the lights, while leaving other appliances turned on.



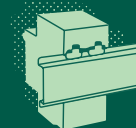
That's what frients are for



Remote on/off switching



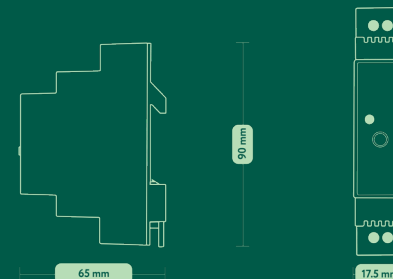
Tracking electricity consumption



Connecting with your DIN rail



*Not all features supported by all hubs



SPECIFICATIONS

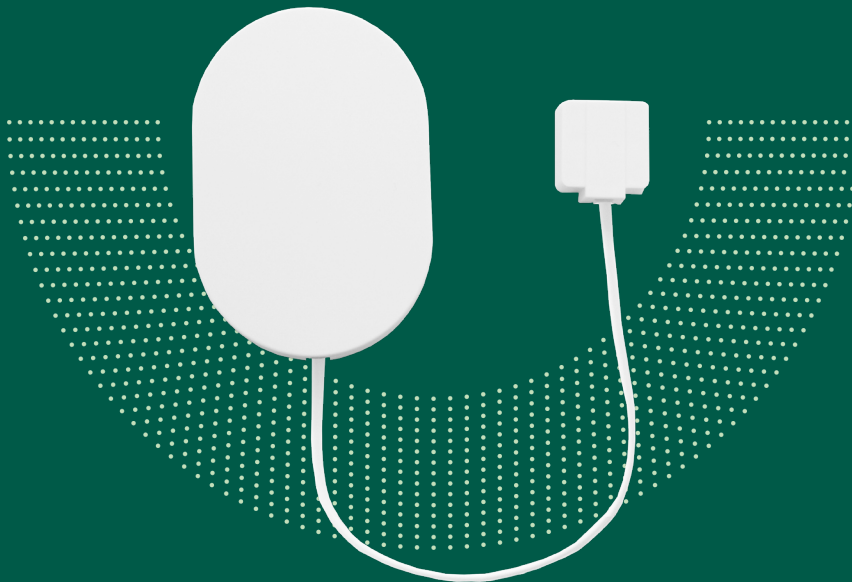
Communication	Zigbee
Power supply	230V +/-10%
IP class	IP30
Operation temp.	0 to +50°C
Color	White

Become energy-aware

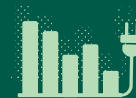
Electricity Meter Interface 2, LED

With the Electricity Meter Interface 2, LED, you can easily keep track of your electricity consumption and identify peaks to help reduce your consumption.

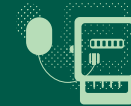
Mount the friendly interface on your electricity meter and start getting meter readings remotely via a compatible hub. You don't need professional help to install it - you can do it by yourself.



That's what frients are for



Informing you
about electricity
consumption



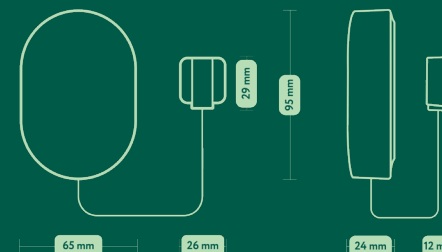
Working with
electronic meters with
LED indicating power
consumption



Easy installation

SPECIFICATIONS

Communication	Zigbee
Battery	2 x AA alkaline batteries, exchangeable
Battery life	2 years, updating every 5 seconds
IP class	IP22
Operation temp.	-20 to +60°C
Color	White



*Not all features supported by all hubs

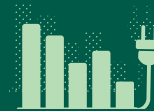
Become energy-aware

Electricity Meter Interface 2, P1

Mount the Electricity Meter Interface 2, P1 on your electricity meter with a compatible P1 interface and start tracking your consumption remotely via a compatible hub.

You can easily install this frient by yourself and make your meter communicate wirelessly. The Electricity Meter Interface 2, P1 is Zigbee 3.0 certified.

That's what frients are for



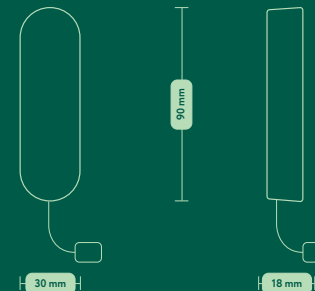
Informing you
about electricity
consumption



Working with
electricity meters
with a P1 port



Easy installation



SPECIFICATIONS

Communication	Zigbee
Power supply	Supplied by the P1 interface (5V)
IP class	IP2X
Operation temp.	0 to +50°C
Color	White



*Not all features supported by all hubs

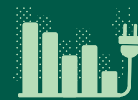
Become energy-aware

EMI Norwegian HAN

In need of help to lower your electricity consumption? The friendly EMI Norwegian HAN lets you track your consumption and helps you save money.

Mount the EMI Norwegian HAN on your electricity meter with an enabled HAN interface and start monitoring your consumption remotely. You can install this frient all by yourself - and suddenly, your meter communicates wirelessly.

That's what frients are for



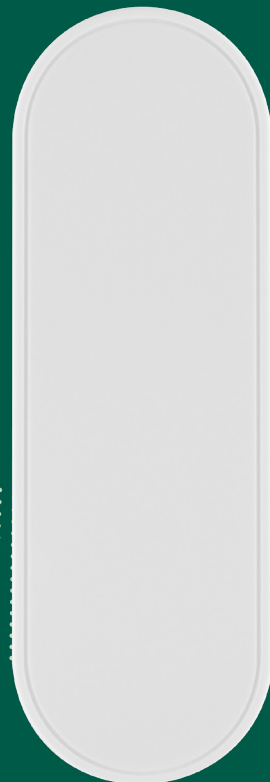
Informing you
about electricity
consumption



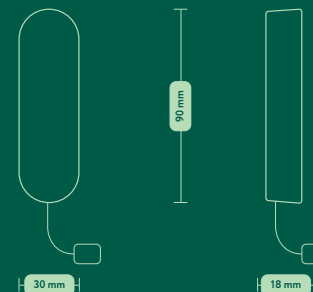
Easy installation



Working with
Norwegian
compatible meters



*Not all features supported by all hubs



SPECIFICATIONS

Communication	Zigbee
Power supply	Supplied by the HAN interface
IP class	IP40
Operation temp.	0 to +50°C
Color	White

Always a frient at home

Motion Sensor Pro

Imagine always having a frient looking after your home. You know, someone who turns off the light whenever you leave a room. Someone who texts you if something's moving in the kitchen while you're at work.

The Motion Sensor Pro lets you detect movement, light, and temperature – all in one. With its tamper protection, the sensor lets you know if someone tries to open it, giving your home an extra level of protection.

That's what frients are for



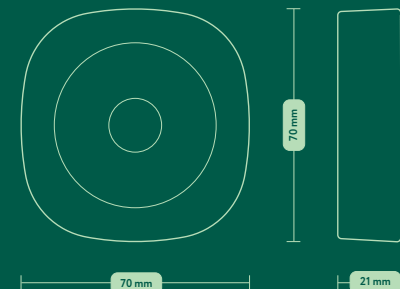
Movement, light,
and temperature
monitoring



Automating your
home



Keeping your home
safe with tamper
protection



SPECIFICATIONS

Communication	Zigbee
Battery	2 x AA, exchangeable
Battery life	3 years, reporting every 2 minutes
IP class	IP30
Operation temp.	0 to +50°C
Color	White



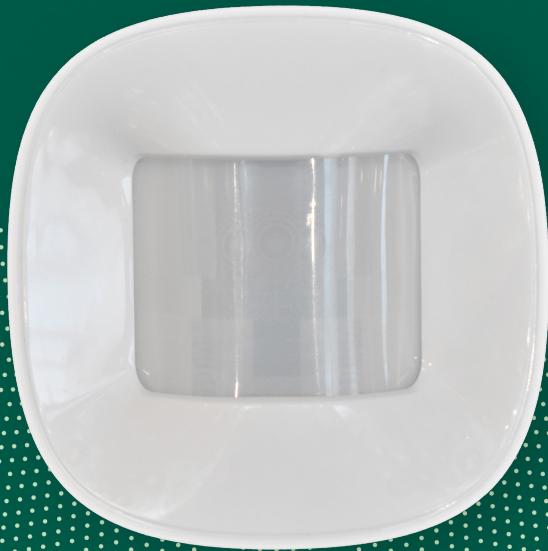
*Not all features supported by all hubs

A pet-friendly home monitor

Motion Sensor 2 Pet

The pet immune Motion Sensor 2 Pet monitors movements, light, and temperature. It helps you automate your daily routines and increase comfort for you and your loved ones.

The Motion Sensor 2 Pet also protects your home from intruders. If this friend detects an unexpected visitor in your home, it'll let you know immediately – but if it's just your cat or dog you won't be bothered by false alarms.



That's what frients are for



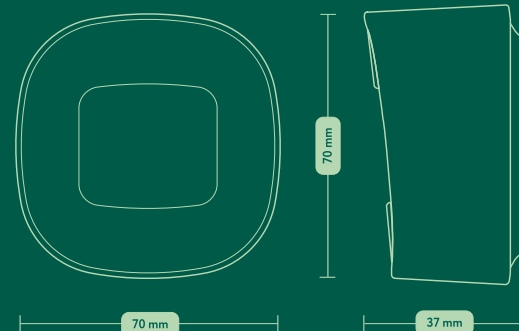
Movement, light,
and temperature
monitoring



No false alarms
caused by your pets



Sending you
notifications



SPECIFICATIONS

Communication	Zigbee
Battery	2 x AA, exchangeable
Battery life	3 years, reporting every 2 minutes
IP class	IP20
Operation temp.	0 to +50°C
Color	White



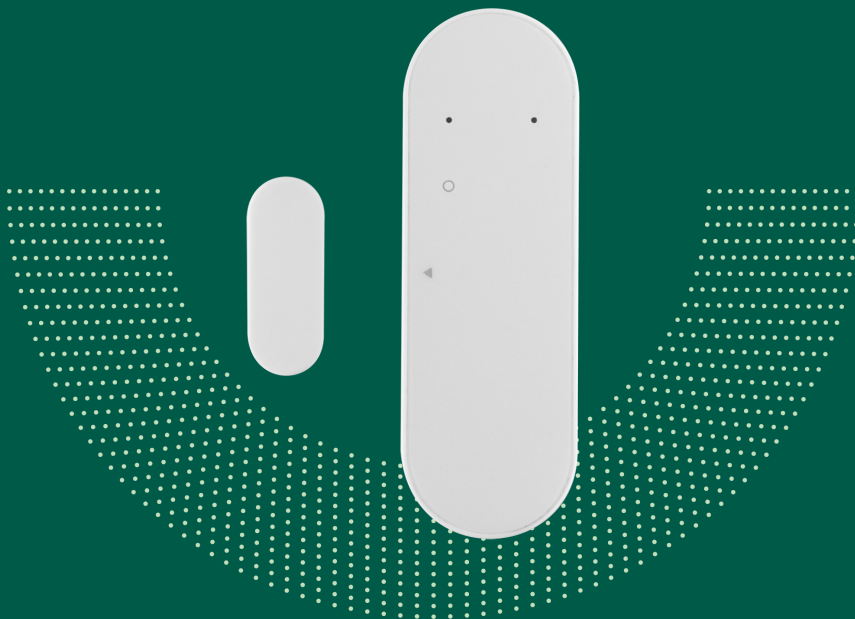
*Not all features supported by all hubs

Open, close, open

Entry Sensor 2 Pro

Placed on a door or a window, the Entry Sensor 2 Pro tracks when it's opened and closed.

The sensor reminds you if you forgot to close a window and keeps your home safe. You'll have peace of mind knowing that everything is well at home - no matter where you are. The friendly sensor also monitors temperature.



That's what frients are for



Keeping your
home safe



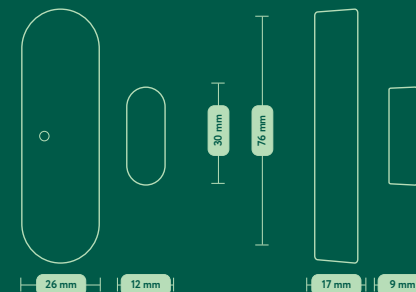
Open/close
monitoring



Temperature
monitoring

SPECIFICATIONS

Communication	Zigbee
Battery	2 x AAA, exchangeable
Battery life	9 years of battery life, when reporting every 2 min
IP class	IP40
Operation temp.	0 to +50°C
Color	White



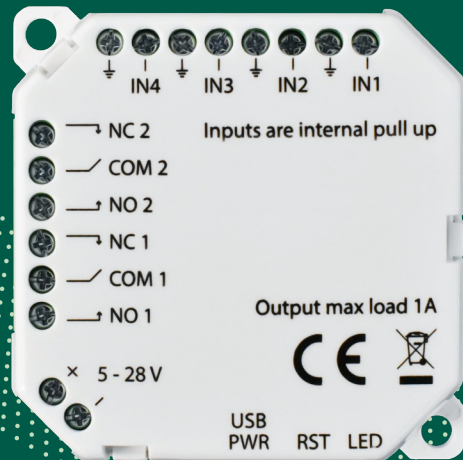
*Not all features supported by all hubs

Bring your wired devices online

IO Module

With the friendly IO Module, you can connect your wired devices (such as electrical blinds, garage doors, heat pumps, and more) to your smart home. Connect devices to the inputs to trigger events. By connecting them to the outputs, you can enable appliances to respond to events.

This enables you to connect the wired devices to your smart home and add them to automations.



That's what frients are for



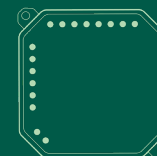
Letting you control
wired appliances
remotely



Making your wired
appliances smart



Automating your
home



45 mm

16 mm

SPECIFICATIONS

Communication	Zigbee
Power supply	6 - 28VDC (alternatively uUSB - e.g. for power bank)
IP class	IP20
Operation temp.	0 to +50°C
Color	White



*Not all features supported by all hubs



More available frients

The frients can help you with a lot more
than energy consumption.

Check out www.frient.com to see
the full product portfolio.

wanna be frients?

info@frient.com